

DEPARTMENT OF THE ARMY TECHNICAL MANUAL

**DIRECT SUPPORT AND GENERAL SUPPORT MAINTENANCE
REPAIR PARTS AND SPECIAL TOOLS LISTS (INCLUDING
DEPOT MAINTENANCE REPAIR PARTS AND SPECIAL TOOLS)
ROTARY CONVERTERS PU-143/U, PU-143A/U, PU-143B/U, PU-143D/U;
MOTOR GENERATORS PU-143E/U, PU-143F/U; ROTARY CONVERTERS
PU-140A/U, PU-141/U, PU-141A/U, PU-141B/U; AND PIONEER MODEL 3K50**

**Headquarters, Department of the Army, Washington, D.C.
29 November 1974**

Current as of 18 September 1974

	Paragraph
SECTION I. INTRODUCTION	
Scope	1-1 2
General	1-2 2
Explanation of columns	1-3 2
Special information	1-4 4
Location of repair parts	1-5 4
Abbreviations (Not applicable)	1-8 5
Reporting of equipment publication improvements	1-7 5
II. REPAIR PARTS LIST	6
Group 0001. Rotary Converter PU-140A/U	6
0002. Rotary Converters 3K50 and PU-141 Series	7
0003. Rotary Converters PU-143 Series	9
0004. Motor generator section	11
Section III. SPECIAL TOOLS, TEST AND SUPPORT EQUIPMENT (Not applicable)	
IV. INDEX -FEDERAL STOCK NUMBER AND REFERENCE NUMBER CROSS REFERENCE TO FIGURE AND ITEM NUMBER	14

*This manual supersedes TM 11-6125-214-35P, 29 October 1962.

SECTION I
INTRODUCTION

1-1. Scope

This manual lists repair parts and special tools required for the performance of direct support, general support, and depot maintenance of the PU-143/U, PU-143A/U, PU-143B/U, PU-143D/U, PU-143E/U, PU-143F/U, PU-140A/U, PU-141/U, PU-141A/U, PU-141B/U, and 3K50. The PCCN for the equipment is as follows:

GTBABA . . . PU-143/U, PU-143A/U, PU-143B/U, PU-143D/U, PU-143E/U, PU-143F/U
GRBAAY . . . PU-140A/U
GTBAAZ . . . PU-141/U, PU-141A/U, PU-141B/U, 3K50

1-2 General

This repair parts and special tools list is divided into the following sections:

a. Repair Parts List -Section II. A list of repair parts authorized for the performance of maintenance at the direct support, general support, and depot level. This repair parts list is arranged in alphabetical order.

b. Special Tools, Test and Support Equipment -Section III. Not applicable.

c. Index -Federal Stock Number and Reference Number Cross-Reference to Figure and Item Number -Section IV. A list, in ascending numerical sequence, of all Federal stock numbers appearing in the listings, followed by a list, in alphanumeric sequence, of all reference numbers appearing in the listings. Federal stock number and reference numbers are cross-referenced to each illustration figure and item number or reference designation appearance.

1-3. Explanation of Columns

The following provides an explanation of columns found in the tabular list.

u. Source, Maintenance, and Recoverability Codes (SMR).

(1) Source code. Indicates the manner of acquiring support items for maintenance, repair, or overhaul of end items. Source codes are -

Code	Explanation
P A -	Item procured and stocked for anticipated or known usage.
P B -	Item procured and stocked for insurance purposes because essentiality dictates

<i>Code</i>	<i>Explanation</i>
	that a minimum quantity be available in the supply systems.
P C -	Item procured and stocked and which otherwise would be coded PA except that it is deteriorative in nature.
P D -	Support item, excluding support equipment, procured for initial issue on outfitting and stocked only for subsequent or additional initial issues or outfittings. Not subject to automatic replenishment.
P E -	Support equipment procured and stocked for initial issue or outfitting to specified maintenance repair activities.
P F -	Support equipment which will not be stocked but which will be centrally procured on demand.
PG --	Item procured and stocked to provide for sustained support for the life of the equipment. It is applied to an Item peculiar to the equipment which because of probable discontinuance or shutdown of production facilities would prove uneconomical to reproduce at a later time.
K D -	An item of depot. overhaul, repair kit and not purchased separately. Depot kit defined as a kit that provides Items required at the time of overhaul or repair
K F -	An item of a maintenance kit and not purchased separately. Maintenance kit defined as a kit that provides an item that can be replaced at organizational or direct support or general support levels of maintenance.
K B -	Item Included in both a depot overhaul/repair kit and a maintenance kit.
M O -	Item to be manufactured or fabricated at organizational level
M F -	Item to be manufactured or fabricated at direct support maintenance level.
M H -	Item to be manufactured or fabricated at general support maintenance level.
M D -	Item to be manufactured or fabricated at depot maintenance level.
A O -	Item to be assembled at, organizational level.
A F -	Item to be assembled at direct support maintenance level.
A H -	Item to be assembled at general support maintenance level.
A D -	Item to be assembled at depot maintenance level.

<i>Code</i>	<i>Explanation</i>
XA	Item is not procured or stocked because the requirements for the item will result in the replacement of the next higher assembly.
XB	Item is not procured or stocked. If not available through salvage, requisition.
XC	Installation drawing, diagram instruction sheet, field service drawing, that is identified by manufacturers' part number.
XD	Support items can be requisitioned with justification.

NOTE

Cannibalization or salvage may be used as a source of supply for any items source coded above except those coded XA and aircraft support items as restricted by AR 700-42

(2) Maintenance code. Maintenance codes are assigned to indicate the levels of maintenance authorized to USE and REPAIR support items. The maintenance codes are entered in the third and fourth positions of the Uniform SMR Code Format as follows-

(a) Use (third position). The maintenance code entered in the third position indicates the lowest maintenance level authorized to remove, replace, and use the support item. The maintenance code entered in the third position indicates one of the following levels of maintenance.

<i>Code</i>	<i>Application/Explanation</i>
O -	Support item is removed, replaced, used at the organizational level of maintenance.
	NOTE
	A code "C" may be used in this position to denote crew or operator maintenance performed within organizational maintenance.
F -	Support item is removed, replaced, used at the direct support maintenance level.
H -	Support item is removed, replaced, used at the general support maintenance.
D -	Support items that are removed, replaced, used at depot only.

(b) Repair (fourth position). The maintenance code entered in the fourth position indicates whether the item is to be repaired and identifies the lowest maintenance level with the capability to perform complete repair (i.e., all authorized maintenance functions). When a maintenance code is not used a dash (-) sign is entered. For multi-service

equipment/systems or when a code is entered, this position will contain one of the following maintenance codes as assigned by the service(s) that require the code—

<i>Code</i>	<i>Application/Explanation</i>
O	The lowest maintenance level capable of complete repair of the support item is the organizational level.
F	The lowest maintenance level capable of complete repair of the support item is direct support
H -	The lowest maintenance level capable of complete repair of the support item is general support.
D -	The lowest maintenance level capable of complete repair of the support item is the depot level.
L -	Repair restricted to designated Specialized Repair Activity.
Z -	Non-repairable. No repair is authorized.
B -	No repair is authorized. The item may be reconditioned by adjusting, lubricating, etc., at the user level. No parts or special tools are procured for the maintenance of this item.

(3) Recoverability code. Recoverability codes are assigned to support items to indicate the disposition action on unserviceable items. The recoverability code is entered in the fifth position of the uniform SMR Code Format as follows-

<i>Code</i>	<i>Explanation</i>
Z -	Nonrepairable item. When unserviceable, condemn and dispose at the level indicated in the first digit of the maintenance code.
O -	Repairable item. When uneconomically repairable, condemn and dispose at organizational level.
F -	Repairable item. When uneconomically repairable, condemn and dispose at the direct support level.
H -	Repairable item. When uneconomically repairable, condemn and dispose at the general support level.
D -	Repairable item. When beyond lower level repair capability, return to depot. Condemnation and disposal not authorized below depot level.
L -	Repairable item. Repair, condemnation, and disposal not authorized below depot/Specialized Repair Activity level.

Code

Explanation

A— Item requires special handling or condemnation procedures because of specific reasons (i.e., precious metal content, high dollar value, critical material or hazardous material).

b. Federal Stock Number. Indicates the Federal stock number assigned to the item and will be used for requisitioning purposes.

NOTE

To convert a Federal stock number to a National stock number (NSN) add "00" after the Federal Stock Classification (FSC) code (first four digits). For example, FSN 6625-553-0142 when converted is NSN 6625-00-53-0142.

c. Description. Indicates the Federal item name and a minimum description required to identify the item. The last line indicates the reference number followed by the applicable Federal Supply Code for Manufacturer (FSCM) in parentheses. The FSCM is used as an element in item identification to designate manufacturer or distributor or Government agency, etc., and is identified in SB 708-42.

d. Unit of Measure (U/M). Indicates the standard or basic quantity by which the listed item is used in performing the actual maintenance function. This measure is expressed by a two-character alphabetical abbreviation; e.g., ea, in, pr, etc., and is the basis used to indicate quantities and allowances in subsequent columns. When the unit of measure differs from the unit of issue, the lowest unit of issue that will satisfy the required units of measure will be requisitioned.

e. Quantity Incorporated in Unit. This column indicates the quantity of the item used in the equipment. Subsequent appearances of the same item in the same assembly are indicated by the letters "REF".

f. 30-Day DS/GS Maintenance Allowances.

NOTE

Allowances in GS column are for GS maintenance only.

(1) The repair parts indicated by asterisk entries in separate allowance columns for DS and GS represent those authorized for use at that category of maintenance to be requisitioned on an "as required" basis, until stockage is based on demand in accordance with AR 710-2.

(2) Allowance quantities are indicated in the special tool lists section for special tools, TMDE, and other support equipment.

g. 1-Year Allowances Per 100 Equipments/

Contingency Planning Purposes. Column intentionally left blank.

h. Depot Maintenance Allowance Per 100 Equipments. This column indicates opposite the first appearance of each item the total quantity authorized for depot maintenance of 100 equipments.

i. Illustration. This column is divided as follows:

(1) **Figure number.** Indicates the figure number of the illustration on which the item is shown in TM 11-5507.

(2) **Item number.** Indicates the item number or reference designation used to reference the item in the illustration.

1-4. Special Information

a. Usable on codes are included in column 3. Uncoded items are applicable to all models. Identification of the usable on codes used in this publication a m -

Code	Used on
A7L	PU-143/U
BT7	PU-143A/U
BT8	PU-143B/U
BT9	PU-143D/U
BUA	PU-143E/U
BUB	PU-143F/U
A7J	PU-140A/U
A7K	PU-141/U
BUC	PU-141A/U
BUD	PU-141B/U
BUE	3K50

b. The following publications pertain to the equipment and its components:

TM 11-5507 Rotary Converters PU-134/U, PU-140/U, PU-140A/U, PU-141/U, PU-141A/U, PU-141B/U, PU-143/U, PU-143A/U, PU-143B/U, and PU-143D/U, and Motor-Generators PU-143E/U and PU-143F/U.

TM 11-6125-214-20P Organizational Maintenance Repair Parts and Special Tools Lists: Rotary Converters PU-143/U, PU-140A/U, PU-143B/U, PU-143D/U; Motor Generators PU-143E/U, PU-143F/U; Rotary Converters PU-140A/U, PU-141/U, PU-141A/U, PU-141B/U; and Pioneer Model 3K50.

1-5. Location of Repair Parts

a. This manual contains one cross-reference index

(sec IV) to be used to locate a repair part when either the Federal stock number or reference number (manufacturer's part number) is known. The first column in the index is prepared in numerical or alphanumeric sequence in ascending order. The reference numbers (manufacturer's part numbers) are listed immediately following the last listed Federal stock number in the index of Federal stock numbers.

b. When the Federal stock number or reference number is known, follow the procedures given in (1) and (2) below.

(1) Refer to the index of Federal stock numbers (sec IV) and locate the Federal stock number or reference number. The FSN and reference number are cross-referenced to the applicable figure and item number or reference designation.

(2) Refer to the repair parts list (sec II) and locate the figure number (col 10a) and item number or reference designation (col 10b) as noted in the FSN index.

c. When the figure and item number or reference designation are known, scrutinize columns 10a and 10b of the repair parts list (sec II) until the item is located.

d. When the FSN, reference number, figure number, item number and reference designation are not known, scrutinize column 3 of the repair parts list (sec II), which is arranged in alphabetical order.

1-6. Abbreviations

Not applicable.

1-7. Reporting of Equipment Publication Improvements

The reporting of errors, omissions, and recommendations for improving this publication by the individual user is encouraged. Reports should be submitted on DA Form 2028 (Recommended Changes to Publications and Blank Forms) and forwarded direct to Commander, US Army Electronics Command, ATTN: AMSEL-MA-DM, Fort Monmouth, NJ., 07703.

SECTION II

(1) SMR CODE	(2) FEDERAL STOCK NUMBER	(3) DESCRIPTION REFERENCE NUMBER & MFR CODE USABLE ON CODE	(4) UNIT OF MEAS	(5) QTY INC IN UNIT	(6) 30-DAY DS MAINT ALLOWANCE			(7) 30-DAY GS MAINT ALLOWANCE			(8) 1 YR ALW PER EQUIP CNTG	(9) DEPOT MAINT ALW PER EQUIP	(10) ILLUSTRATION	
					(a)	(b)	(c)	(a)	(b)	(c)			(a)	(b)
					1-20	21-50	51-100	1-20	21-50	51-100			FIGURE NO	ITEM NO
YDFZZ		GROUP JUJ1 ROTARY CONVERTER PU-14JA/B CAPACITOR, FIXED, PAPER DIELECTRIC C1..	EA	4	*	*	*	*	*	*			18	C1
YDFZZ		1 SECT, 500V ACDC CA507 (81349)	EA	REF	*	*	*	*	*	*			18	C4
YDFZZ		CAPACITOR, FIXED, PAPER DIELECTRIC C4..	EA	REF	*	*	*	*	*	*			18	C5
YDFZZ		1 SECT, 500V ACDC CA507 (81349)	EA	REF	*	*	*	*	*	*			18	C8
YDFZZ		CAPACITOR, FIXED, PAPER DIELECTRIC C8..	EA	REF	*	*	*	*	*	*			18	C8
YDFZZ		1 SECT, 500V ACDC CA507 (81349)	EA	REF	*	*	*	*	*	*			18	C8
PAFZZ	5940-219-6695	COIL, RADIO FREQUENCY L4.....	EA	2	*	*	*	*	*	*			3	L4
PAFZZ	5950-219-6695	18175 (53021)	EA	REF	*	*	*	*	*	*			18	L8
YDFZZ		COIL, RADIO FREQUENCY L8.....	EA	REF	*	*	*	*	*	*			18	L8
YDFZZ		18175 (53021)	EA	REF	*	*	*	*	*	*			18	L1
YDFZZ		REACTOR L1.....	EA	2	*	*	*	*	*	*			18	L1
YDFZZ		A4363L (53021)	EA	REF	*	*	*	*	*	*			18	L5
YDFZZ		REACTOR L5.....	EA	REF	*	*	*	*	*	*			18	L5
YDFZZ		A4363L (53021)	EA	REF	*	*	*	*	*	*			18	L5
XDFZZ		SUPPRESSOR, ELECTRICAL, NOISE FL1.....	EA	1	*	*	*	*	*	*			11	FL1
XDFZZ		ASC17768 (53021)	EA	1	*	*	*	*	*	*			11	FL1
XDFZZ		ARMATURE-ROTOR, MOTOR-GENERATOR E1.....	EA	1	*	*	*	*	*	*			11	E1
PAFZZ	3110-156-4219	ASB17770W4883 (53021)	EA	2	*	*	*	*	*	*			2	G1
PAFZZ	3110-156-4219	BEARING, BALL ANNULAR O1.....	EA	2	*	*	*	*	*	*			11	G1
PAFZZ	3110-156-4219	118-01775-400 (969J6)	EA	REF	*	*	*	*	*	*			11	G2
XDOZZ		BEARING, BALL ANNULAR O2.....	EA	REF	*	*	*	*	*	*			11	G2
XDOZZ		118-01775-400 (969J6)	EA	REF	*	*	*	*	*	*			11	G2
XDOZZ		BRUSH, ELECTRICAL CONTACT E2 AC	EA	2	*	*	*	*	*	*			26	E2
XDOZZ		SCJ99875-22 (80063)	EA	REF	*	*	*	*	*	*			26	E3
PAOZZ	5977-232-6085	BRUSH, ELECTRICAL CONTACT E3 AC	EA	REF	*	*	*	*	*	*			26	E3
PAOZZ	5977-232-6085	SCJ99875-22 (80063)	EA	REF	*	*	*	*	*	*			26	E3
PAOZZ	5977-232-6085	BRUSH, ELECTRICAL CONTACT E4 DC	EA	2	*	*	*	*	*	*			10	E4
PAOZZ	5977-232-6085	SCJ99875-3 (80063)	EA	REF	*	*	*	*	*	*			26	E5
PAFZZ	5910-504-7418	BRUSH, ELECTRICAL CONTACT E5 DC	EA	REF	*	*	*	*	*	*			26	E5
PAFZZ	5910-504-7418	SCJ99875-3 (80063)	EA	REF	*	*	*	*	*	*			26	E5
PAFZZ	5910-504-7418	CAPACITOR, FIXED, PAPER DIELECTRIC C2..	EA	4	*	*	*	*	*	*			3	C2
PAFZZ	5910-504-7418	1 SECT, 500V ACDC, 0.1 UF CA36KFW104 (81349)	EA	REF	*	*	*	*	*	*			26	C3
PAFZZ	5910-504-7418	CAPACITOR, FIXED, PAPER DIELECTRIC C3..	EA	REF	*	*	*	*	*	*			26	C3
PAFZZ	5910-504-7418	1 SECT, 500V ACDC, 0.1 UF CA36KFW104 (81349)	EA	REF	*	*	*	*	*	*			26	C6
PAFZZ	5910-504-7418	CAPACITOR, FIXED, PAPER DIELECTRIC C6..	EA	REF	*	*	*	*	*	*			26	C6
PAFZZ	5910-504-7418	1 SECT, 500V ACDC, 0.1 UF CA36KFW104 (81349)	EA	REF	*	*	*	*	*	*			26	C7
PAFZZ	5910-504-7418	CAPACITOR, FIXED, PAPER DIELECTRIC C7..	EA	REF	*	*	*	*	*	*			26	C7
PAFZZ	6115-221-0900	1 SECT, 500V ACDC, 0.1 UF CA36KFW104 (81349)	EA	REF	*	*	*	*	*	*			26	C7
PAFZZ	6115-221-0900	CAPACITOR, FIXED, PAPER DIELECTRIC C7..	EA	REF	*	*	*	*	*	*			26	C7
PAFZZ	6115-221-0900	BRUSH, ELECTRICAL CONTACT E1 AC	EA	1	*	*	*	*	*	*			3	A1
PAFZZ	6115-221-0900	ASA4688E (53021)	EA	1	*	*	*	*	*	*			3	A1

SECTION II

(1) SMR CODE	(2) FEDERAL STOCK NUMBER	(3) DESCRIPTION REFERENCE NUMBER & MFR CODE USABLE ON CODE	(4) UNIT OF MEAS	(5) QTY INC IN UNIT	(6) 30-DAY DS MAINT ALLOWANCE			(7) 30-DAY GS MAINT ALLOWANCE			(8) 1-YR ALW PER 100 EQUIP CNTG	(9) DEPOT MAINT ALW PER 100 EQUIP	(10) ILLUSTRATION	
					(a)	(b)	(c)	(a)	(b)	(c)			(a)	(b)
					1-20	21-50	51-100	1-20	21-50	51-100			FIGURE NO	ITEM NO
XDFZZ		RING, HOLDER, ELECTRICAL BRUSH A3 DC . ASA4687E (53021) A7J	EA	1	*	*	*	*	*	*		26	A3	
XDFZZ		WINDING, MOTOR-GENERATOR FIELD L2,L3,L6, L7 ASAL5089 (53021) A7J	EA	1	*	*	*	*	*	*		11		
XDFZZ		GROUP 0002 ROTARY CONVERTERS 3K50 and PU-141 SERIES CAPACITOR, FIXED, PAPER DIELECTRIC C1..	EA	2	*	*	*	*	*	*			C1	
XDFZZ		1 SECT, 200V DC, 0.5 UF 1C2P5C (14655) BUE	EA	REF	*	*	*	*	*	*			C5	
PAFZZ	5910-112-7260	CAPACITOR, FIXED, PAPER DIELECTRIC C4..	EA	1	*	*	*	*	*	*	3		C4	
PAFZZ	5910-504-7418	2 SECT, 600V DC, 0.5 UF, EA SECT CP5384EF504V1 (81349) BUE	EA	1	*	*	*	*	*	*	3	13	C2	
PAFZZ	5910-882-0556	CAPACITOR, FIXED, PAPER DIELECTRIC C3..	EA	1	*	*	*	*	*	*	3	13	C3	
PAFZZ	5910-112-7158	1 SECT, 500V ACDC, 0.1 UF CA36KFW104 (81349) BUC	EA	1	*	*	*	*	*	*	3	13	C3	
XDFZZ		CAPACITOR, FIXED, PAPER DIELECTRIC C7..	EA	2	*	*	*	*	*	*	3	21	C7	
XDFZZ		2 SECT, 600V DC, 0.25 UF EA SECT CP5384EF254V (81349) BUD	EA	2	*	*	*	*	*	*			L4	
XDFZZ		COIL, RADIO FREQUENCY L4.....	EA	2	*	*	*	*	*	*			L4	
XDFZZ		ASA4293 (47362) BUE	EA	REF	*	*	*	*	*	*			L8	
XDFZZ		COIL, RADIO FREQUENCY L8.....	EA	REF	*	*	*	*	*	*			L8	
XDFZZ		ASA4293 (47362) BUE	EA	2	*	*	*	*	*	*		21	L1	
YDFZZ		COIL, RADIO FREQUENCY L1.....	EA	2	*	*	*	*	*	*		21	L1	
XDFZZ		273X3 (82102) BUD	EA	REF	*	*	*	*	*	*		21	L2	
PAQZZ	5935-199-3178	COLLAR, SPACING MP10 MTS CAPS A261-1680 (97475) BUD	EA	2	*	*	*	*	*	*		21	MP10	
PAFZZ	5905-234-3338	CONNECTOR, RECEPTACLE, ELECTRICAL J1... 7255 (74545) BUD	EA	1	*	*	*	*	*	*	3	21	J1	
XDFZZ		RESISTOR, ADJUSTABLE R1 50 OHM, 25W .. 0366 (44655) BUE	EA	1	*	*	*	*	*	*	3		R1	
XDFZZ		SUPPRESSOR, ELECTRICAL, NOISE FL1..... B6338 (97475) BUD	EA	1	*	*	*	*	*	*		9	FL1	
PAFZZ	3110-144-8615	ARMATURE-ROTOR, MOTOR-GENERATOR E1..... C184A1259 (97475) A7K,BUD	EA	1	*	*	*	*	*	*		9	E1	
PAFZZ	3110-144-8615	BEARING, BALL ANNULAR O1.....	EA	2	*	*	*	*	*	*	2	8	O1	
PAFZZ	3110-144-8615	111-02003-2000 (96906) BUC	EA	REF	*	*	*	*	*	*		8	O2	
PAFZZ	3120-447-8449	BEARING, BALL ANNULAR O2.....	EA	2	*	*	*	*	*	*	2		O1	
PAFZZ	3120-447-8449	BEARING, SLEEVE O1..... 4913 (59690) BUE	EA	REF	*	*	*	*	*	*			O2	
PAFZZ	6125-406-1907	BEARING, SLEEVE O2..... 4913 (59690) BUE	EA	2	*	*	*	*	*	*	2	9	O1	
PAFZZ		BEARING, SLEEVE O1..... A173-295 (97475) A7K,BUD	EA	2	*	*	*	*	*	*			O1	

SECTION II

SMR CODE	FEDERAL STOCK NUMBER	DESCRIPTION REFERENCE NUMBER & MFR CODE USABLE ON CODE	UNIT OF MEAS	QTY INC IN UNIT	30-DAY DS MAINT ALLOWANCE			30-DAY GS MAINT ALLOWANCE			1-YR ALW PER 100 EQUIP CNTGCT	DEPOT MAINT ALW PER 100 EQUIP	ILLUSTRATION	
					(a)	(b)	(c)	(a)	(b)	(c)			(a)	(b)
					1-20	21-50	51-100	1-20	21-50	51-100			FIGURE NO	ITEM NO
PAFZZ	6125-408-1907	BEARING SLEEVE J2..... A179-295 (97475) ATK,BUD	EA	REF	*	*	*	*	*	*		9	02	
PAOZZ	5977-232-0081	BRUSH, ELECTRICAL CONTACT E2 AC SCJ99875-6 (80063) BUE	EA	2	*	*	*	*	*	*		10	E2	
PAUZZ	5977-232-3031	BRUSH, ELECTRICAL CONTACT E3 AC SCJ99875-6 (80063) BUE	EA	REF	*	*	*	*	*	*			E3	
PAUZZ	5977-232-5289	BRUSH, ELECTRICAL CONTACT E4 DC SCJ99875-9 (80063) BUE	EA	2	*	*	*	*	*	*		10	E4	
PAUZZ	5977-232-5269	BRUSH, ELECTRICAL CONTACT E5 DC SCJ99875-9 (80063) BUE	EA	REF	*	*	*	*	*	*			E5	
PAOZZ	5977-194-9695	BRUSH, ELECTRICAL CONTACT E2 AC SCJ99875-4 (80063) ATK	EA	2	*	*	*	*	*	*		10	E2	
PAOZZ	5977-194-9695	BRUSH, ELECTRICAL CONTACT E3 AC SCJ99875-4 (80063) ATK	EA	REF	*	*	*	*	*	*			E3	
PAUZZ	5977-230-6032	BRUSH, ELECTRICAL CONTACT E4..... SCJ99875-11 (80063) ATK,BUD	EA	2	*	*	*	*	*	*		10	29	E4
PAOZZ	5977-230-6032	BRUSH, ELECTRICAL CONTACT E5..... SCJ99875-11 (80063) ATK,BUD	EA	REF	*	*	*	*	*	*			29	E5
		BRUSH, ELECTRICAL CONTACT NG-REF-DESIG... JJVERNUK DR	EA	2	*	*	*	*	*	*				
PAUZZ	5977-228-7096	BRUSH, ELECTRICAL CONTACT E4 DC SCJ99875-10 (80063) BUC	EA	4	*	*	*	*	*	*		10	27	E4
PAOZZ	5977-228-7098	BRUSH, ELECTRICAL CONTACT E5 DC SCJ99875-10 (80063) BUC	EA	REF	*	*	*	*	*	*			27	E5
PAOZZ	5977-228-7097	BRUSH, ELECTRICAL CONTACT E2 AC SCJ105822-8 (80063) BUC	EA	4	*	*	*	*	*	*		10	27	E2
PAOZZ	5977-228-7097	BRUSH, ELECTRICAL CONTACT E3 AC SCJ105822-8 (80063) BUC	EA	REF	*	*	*	*	*	*			27	E3
		BRUSH, ELECTRICAL CONTACT E2 AC SCJ99875-8 (80063) BUD	EA	2	*	*	*	*	*	*			28	E2
		BRUSH, ELECTRICAL CONTACT E3 AC SCJ99875-8 (80063) BUD	EA	REF	*	*	*	*	*	*			28	E3
		CAPACITOR, FIXED, MICA DIELECTRIC C2 1 SECT, 500V DC, 5100 UF CM408512J (81349) BUE	EA	4	*	*	*	*	*	*				C2
		CAPACITOR, FIXED, MICA DIELECTRIC C3 1 SECT, 500V DC, 5100 UF CM408512J (81349) BUE	EA	REF	*	*	*	*	*	*				C3
		CAPACITOR, FIXED, MICA DIELECTRIC C6 1 SECT, 500V DC, 5100 UF CM408512J (81349) BUE	EA	REF	*	*	*	*	*	*				C6
		CAPACITOR, FIXED, MICA DIELECTRIC C7 1 SECT, 500V DC, 5100 UF CM408512J (81349) BUE	EA	REF	*	*	*	*	*	*				C7
		CAPACITOR, FIXED, PAPER DIELECTRIC C1.. 1 SECT, 100V DC, 0.1 UF CA442 (81351) BUC	EA	2	*	*	*	*	*	*			13	C1
		CAPACITOR, FIXED, PAPER DIELECTRIC C4.. 1 SECT, 100V DC, 0.1 UF CA442 (81351) BUC	EA	REF	*	*	*	*	*	*			13	C4
PAFZZ	5910-180-4804	CAPACITOR, FIXED, PAPER DIELECTRIC C3.. LUNTIUED	EA	4	*	*	*	*	*	*		3	29	C3

SECTION II

(1) SMR CODE	(2) FEDERAL STOCK NUMBER	(3) DESCRIPTION REFERENCE NUMBER & MFR CODE USABLE ON CODE	(4) UNIT OF MEAS	(5) QTY INC IN UNIT	(6) 30-DAY DS MAINT ALLOWANCE			(7) 30-DAY GS MAINT ALLOWANCE			(8) 1-YR ALW PER 100 EQUIP CNTGCT	(9) DEPOT MAINT ALW PER 100 EQUIP	(10) ILLUSTRATION	
					(a)	(b)	(c)	(a)	(b)	(c)			(a)	(c)
					1-20	21-50	51-100	1-20	21-50	51-100			FIGURE NO	ITEM NO
		CONTINUED												
PAFZZ	5910-160-4803	1 SECT, 250V ACDC, 0.01 UF CA478FU103 (81349) CAPACITOR, FIXED, PAPER DIELECTRIC C4..	BUD EA	REF	*	*	*	*	*	*			29	C4
PAFZZ	5910-160-4903	1 SECT, 250V ACDC, 0.01 UF CA478FU103 (81349) CAPACITOR, FIXED, PAPER DIELECTRIC C5..	BUD EA	REF	*	*	*	*	*	*			29	C5
PAFZZ	5910-160-4803	1 SECT, 250V ACDC, 0.01 UF CA478FU103 (81349) CAPACITOR, FIXED, PAPER DIELECTRIC C6..	BUD EA	REF	*	*	*	*	*	*			29	C6
XDOZZ		MOUNT, VIBRATION MP11..... A246-531 (97475) A7K,BUD	EA	4	*	*	*	*	*	*				MP11
PAFZZ	6115-221-0901	MOUNTING A1 MTS AC BRUSHHOLDER P468888C (47362) BUE	EA	1	*	*	*	*	*	*	3			A1
XDFZZ		MOUNTING A2 MTS DC BRUSHHOLDER ASA4687C (47362) BUE	EA	1	*	*	*	*	*	*				A2
PAFZZ	5975-406-1904	MOUNTING A1 MTS AC BRUSHHOLDER A156-631 (97475) A7K	EA	1	*	*	*	*	*	*	3			A1
PAFZZ	6115-221-5401	MOUNTING A2 MTS DC BRUSHHOLDER A156-910 (97475) A7K	EA	1	*	*	*	*	*	*	3			A2
XDOZZ		PACKING, PREFORMED NO-REF-DESIG LUB ARM. BRG 162-78 (97475) BUD	EA	2	*	*	*	*	*	*			9	
XDOZZ		SPRING, HELICAL, EXTENSION E6 DC..... BRJSH	EA	2	*	*	*	*	*	*				E6
XDOZZ		SPRING, HELICAL, EXTENSION E7 AC A168-1068 (97475) A7K	EA	2	*	*	*	*	*	*				E7
XDOZZ		SPRING, SPIRAL TORSION E7 AC BRUSH ... Y176JL (32770) BUC	EA	2	*	*	*	*	*	*			27	E7
XDFZZ		WASHER, FLAT NO-REF-DESIG ARM SHAFT 161-1265 (97475) BUD	EA	6	*	*	*	*	*	*			9	H1
XDFZZ		WASHER, FLAT H1 ARM SHAFT 162-116 (97475) BUD	EA	6	*	*	*	*	*	*			9	H1
XDFZZ		GRJUP 0003 ROTARY CONVERTERS PU-143 SERIES CAPACITOR, FIXED, PAPER DIELECTRIC C7..	EA	1	*	*	*	*	*	*			19	C7
YDFZZ		4 SECT, 2 SECT 0.3 UF, 300V AC, 2 SECT 0.31 UF, 440V AC 7033 (72928) A7L,B77	EA	2	*	*	*	*	*	*			19	C1
XDFZZ		CAPACITOR, FIXED, PAPER DIELECTRIC C1.. 1 SECT, 0.5 UF, 300V DC 7295 (72928) A7L,B77	EA	REF	*	*	*	*	*	*			19	C2
YDFZZ		CAPACITOR, FIXED, PAPER DIELECTRIC C2.. 1 SECT, 0.5 UF, 300V DC 7295 (72928) A7L,B77	EA	4	*	*	*	*	*	*			18	C1
YDFZZ		CAPACITOR, FIXED, PAPER DIELECTRIC C1.. 1 SECT, 0.25 UF, 500V ACDC CAS07 (81349) B78	EA	REF	*	*	*	*	*	*			18	C2
YDFZZ		CAPACITOR, FIXED, PAPER DIELECTRIC C2.. 1 SECT, 0.25 UF, 500V ACDC CAS07 (81349) B78	EA	REF	*	*	*	*	*	*			18	C2

SECTION II

SMR CODE	FEDERAL STOCK NUMBER	DESCRIPTION REFERENCE NUMBER & MFR CODE USABLE ON CODE	UNIT OF MEAS	QTY INC IN UNIT	30-DAY DS MAINT ALLOWANCE			30-DAY GS MAINT ALLOWANCE			1-YR ALW PER 100 EQUIP CNTGCT	DEPOT MAINT ALW PER 100 EQUIP	ILLUSTRATION	
					(a)	(b)	(c)	(a)	(b)	(c)			(a)	(b)
					1-20	21-50	51-100	1-20	21-50	51-100			FIGURE NO	ITEM NO
XDFZZ		CAPACITOR, FIXED, PAPER DIELECTRIC 1 SECT, 0.25 UF, 500V ACDC CA507 (81349)	C8..	EA REF	*	*	*	*	*	*			18	C8
XDFZZ		CAPACITOR, FIXED, PAPER DIELECTRIC 1 SECT, 0.25 UF, 500V ACDC CA507 (81349)	C9..	EA REF	*	*	*	*	*	*			18	C9
PAFZZ	5910-233-4691	CAPACITOR, FIXED, PAPER DIELECTRIC 2 SECT, 0.25 UF, 600V DC, EA SECT CP5380EF254V (81349)	C2..	EA 2	*	*	*	*	*	*		3		C2
PAFZZ	5910-233-4891	CAPACITOR, FIXED, PAPER DIELECTRIC 2 SECT, 0.25 UF, 600V DC, EA SECT CP5380EF254V (81349)	C9..	EA REF	*	*	*	*	*	*				C9
XDFZZ		CAPACITOR, FIXED, PAPER DIELECTRIC 1 SECT, 0.22 UF, 600V DC 181P22406S12 (56289)	C1..	EA 4	*	*	*	*	*	*			18-1	C1
XDFZZ		CAPACITOR, FIXED, PAPER DIELECTRIC 1 SECT, 0.22 UF, 600V DC 181P22406S12 (56289)	C2..	EA REF	*	*	*	*	*	*			18-1	C2
XDFZZ		CAPACITOR, FIXED, PAPER DIELECTRIC 1 SECT, 0.22 UF, 600V DC 181P22406S12 (56289)	C7..	EA REF	*	*	*	*	*	*			18-1	C7
XDFZZ		CAPACITOR, FIXED, PAPER DIELECTRIC 1 SECT, 0.22 UF, 600V DC 181P22406S12 (56289)	C8..	EA REF	*	*	*	*	*	*			18-1	C8
XDFZZ		COIL, RADIO FREQUENCY A4293 (53021)	L3.....	EA 2	*	*	*	*	*	*			19	L3
XDFZZ		COIL, RADIO FREQUENCY A4293 (53021)	L4.....	EA REF	*	*	*	*	*	*			19	L4
PAFZZ	5950-219-8695	COIL, RADIO FREQUENCY A18175 (53021)	L3.....	EA 2	*	*	*	*	*	*		3	18	L3
PAFZZ	5950-219-6695	COIL, RADIO FREQUENCY A18175 (53021)	L4.....	EA REF	*	*	*	*	*	*			18	L4
XDFZZ		COIL, RADIO FREQUENCY SM3328112 (80063)	L3.....	EA 2	*	*	*	*	*	*			18-1	L3
XDFZZ		COIL, RADIO FREQUENCY SM3328112 (80063)	L4.....	EA REF	*	*	*	*	*	*			18-1	L4
PAOZZ	5935-161-976	CONNECTOR, RECEPTACLE, ELECTRICAL 7210 (74545)	J1...	EA 1	*	*	*	*	*	*		3	19	J1
PAOZZ	5935-259-3326	CONNECTOR, RECEPTACLE, ELECTRICAL 7535 (74545)	J1...	EA 1	*	*	*	*	*	*		3	18-1	J1
XDFZZ		KNJB MP9..... 5150 (44655)	BT8, BT9, BUA, BUB	EA 1	*	*	*	*	*	*			18-1	MP9
XDFZZ		REACTOR L1..... 8937 (53021)	BT8, BT9, BUA, BUB	EA 2	*	*	*	*	*	*			19	L1
XDFZZ		REACTOR L2..... 8937 (53021)	BT7	EA REF	*	*	*	*	*	*			19	L2
XDFZZ		REACTOR L1..... 18174 (53021)	BT8	EA 2	*	*	*	*	*	*			18	L1
XDFZZ		REACTOR L2..... 18174 (53021)	BT8	EA REF	*	*	*	*	*	*			18	L2
XDFZZ		REACTOR L1..... SM3328102 (80063)	BT8	EA 1	*	*	*	*	*	*			18-1	L1

SECTION II

(1) SMR CODE	(2) FEDERAL STOCK NUMBER	(3) DESCRIPTION REFERENCE NUMBER & MFR CODE USABLE ON CODE	(4) UNIT OF MEAS	(5) QTY INC IN UNIT	(6) 30-DAY GS MAINT ALLOWANCE			(7) 30-DAY GS MAINT ALLOWANCE			(8) 1 YR ALW PER 100 EQUIP CNTGCT	(9) DEPOT MAINT ALW PER 100 EQUIP	(10) ILLUSTRATION	
					(a)	(b)	(c)	(a)	(b)	(c)			(a)	(b)
					1-20	21-50	51-100	1-20	21-50	51-100			FIGURE NO	ITEM NO
PAFZZ	5950-834-2247	REACTOR L2..... SMC328094 (80063) BUA,BUB	EA	1	*	*	*	*	*	*	2	18-1	L2	
PAFZZ	5905-107-8984	RESISTOR, ADJUSTABLE R1 7.5 OHM, 25W DIVBE03628 (44655) BT7	EA	1	*	*	*	*	*	*	3	19	R1	
PAFZZ	5905-258-0253	RESISTOR, VARIABLE R1 6 OHM, 50 W RPI51FD6R0KK (81349) BT8,BT9,BUA,BUB	EA	1	*	*	*	*	*	*	3	18	R1	
XDPZZ		ARMATURE-ROTOR, MOTOR-GENERATOR E1..... C184A1249-24V (97475) ATL	EA	1	*	*	*	*	*	*			E1	
XDPZZ		ARMATURE-ROTOR, MOTOR-GENERATOR E1..... ASB1763344885 (53021) BT8	EA	1	*	*	*	*	*	*		11	E1	
XDPZZ		ARMATURE-ROTOR, MOTOR-GENERATOR E1..... ASB15061 (53021) BT7,BT9	EA	1	*	*	*	*	*	*		10	E1	
XDPZZ		GROUP 0004 MOTOR GENERATOR SECTION ARMATURE-ROTOR, MOTOR-GENERATOR E1..... SMC328052 (80063) BUA,BUB	EA	1	*	*	*	*	*	*		11-1	E1	
XDPZZ		BEARING SLEEVE 01..... A173-295 (97475) ATL	EA	2	*	*	*	*	*	*			O1	
XDPZZ		BEARING SLEEVE 02..... A179-295 (97475) ATL	EA	REF	*	*	*	*	*	*			O2	
PAFZZ	3110-156-3493	BEARING, BALL ANNULAR 01..... 117-01715-3000 (96906) BT7	EA	2	*	*	*	*	*	*	2	25	O1	
PAFZZ	3110-156-3493	BEARING, BALL ANNULAR 02..... 117-01715-3000 (96906) BT7	EA	REF	*	*	*	*	*	*		25	O2	
PAFZZ	3110-158-4219	BEARING, BALL ANNULAR 01..... 118-01775-400 (96906) BT8,BT9,BUA,BUB	EA	2	*	*	*	*	*	*	2	11	O1	
PAFZZ	3110-156-4219	BEARING, BALL ANNULAR 02..... 118-01775-400 (96906) BT8,BT9,BUA,BUB	EA	REF	*	*	*	*	*	*		11	O2	
PAOZZ	5977-230-6032	BRUSH, ELECTRICAL CONTACT E4 DC SCJ99875-11 (80063) ATL	EA	2	*	*	*	*	*	*	10		E4	
PAOZZ	5977-230-6032	BRUSH, ELECTRICAL CONTACT E5 DC SCJ99875-11 (80063) ATL	EA	REF	*	*	*	*	*	*			E5	
PAOZZ	5977-194-9695	BRUSH, ELECTRICAL CONTACT E2 AC SCJ99875-14 (80063) ATL	EA	2	*	*	*	*	*	*	10		E2	
PAOZZ	5977-194-9695	BRUSH, ELECTRICAL CONTACT E3 AC SCJ99875-14 (80063) ATL	EA	REF	*	*	*	*	*	*			E3	
PAOZZ	5977-232-6081	BRUSH, ELECTRICAL CONTACT E2 AC SCJ99875-6 (80063) BT7,BT8	EA	2	*	*	*	*	*	*	10	26	E2	
PAOZZ	5977-232-6081	BRUSH, ELECTRICAL CONTACT E3 AC SCJ99875-6 (80063) BT7,BT8	EA	REF	*	*	*	*	*	*		26	E3	
PAOZZ	5977-232-5269	BRUSH, ELECTRICAL CONTACT E4 DC SCJ99875-9 (80063) BT7,BT8	EA	2	*	*	*	*	*	*	10	26	E4	
PAOZZ	5977-232-5269	BRUSH, ELECTRICAL CONTACT E5 DC SCJ99875-9 (80063) BT7,BT8	EA	REF	*	*	*	*	*	*		26	E5	
PAOZZ	5977-519-6043	BRUSH, ELECTRICAL CONTACT E2 AC SMC328135 (80063) BT9,BUA,BUB	EA	2	*	*	*	*	*	*	10	11-1	E2	
PAOZZ	5977-519-6043	BRUSH, ELECTRICAL CONTACT E3 AC SMC328135 (80063) BT9,BUA,BUB	EA	REF	*	*	*	*	*	*		11-1	E3	
PAOZZ	5977-519-6042	BRUSH, ELECTRICAL CONTACT E4 DC SMC328134 (80063) BT9,BUA,BUB	EA	2	*	*	*	*	*	*	10	11-1	E4	
PAOZZ	5977-519-6042	BRUSH, ELECTRICAL CONTACT E5 DC SMC328134 (80063) BT9,BUA,BUB	EA	REF	*	*	*	*	*	*		11-1	E5	
XDPZZ		LAPACITOR, FIXED, PAPER DIELECTRIC C3... CONTINUED	EA	2	*	*	*	*	*	*		24	C3	

SECTION II

(1) SMR CODE	(2) FEDERAL STOCK NUMBER	(3) DESCRIPTION REFERENCE NUMBER & MFR CODE USABLE ON CODE		(4) UNIT OF MEAS	(5) QTY INC IN UNIT	(6) 30-DAY DS MAINT ALLOWANCE			(7) 30-DAY GS MAINT ALLOWANCE			(8) 1-YR ALW PER 100 EQUIP CNTGCT	(9) DEPOT MAINT ALW PER 100 EQUIP	(10) ILLUSTRATION		
						(a)	(b)	(c)	(a)	(b)	(c)			(a)	(b)	
						1-20	21-50	51-100	1-20	21-50	51-100			FIGURE NO.	ITEM NO.	
		CONTINUED														
		1 SECT, 0.1 UF, 100V DC CA448 (81351)	A7L,BT7 C4..	EA	REF	*	*	*	*	*	*			24	C4	
PAFZZ	5910-801-3483	1 SECT, 0.1 UF, 100V DC CA448 (81351)	A7L,BT7 C5..	EA	2	*	*	*	*	*	*	3		25	C5	
PAFZZ	5910-801-3433	1 SECT, 0.1 UF, 500V AC CA448 (81349)	A7L,BT7 C6..	EA	REF	*	*	*	*	*	*			25	C6	
PAFZZ	5910-801-3483	1 SECT, 0.1 UF, 500V AC CA448 (81349)	A7L,BT7 C3..	EA	4	*	*	*	*	*	*	3		26	C3	
PAFZZ	5910-801-3483	1 SECT, 0.1 UF, 500V AC CA448 (81349)	BT8 C4..	EA	REF	*	*	*	*	*	*			26	C4	
PAFZZ	5910-801-3483	1 SECT, 0.1 UF, 500V AC CA448 (81349)	BT8 C5..	EA	REF	*	*	*	*	*	*			26	C5	
PAFZZ	5910-801-3483	1 SECT, 0.1 UF, 500V AC CA448 (81349)	BT8 C6..	EA	REF	*	*	*	*	*	*			26	C6	
PAFZZ	5910-801-3483	2 SECT, 0.1 UF, 600V DC CP5486E104V (81350)	BT9 C3..	EA	2	*	*	*	*	*	*			26	C3	
PAFZZ	5910-801-3483	2 SECT, 0.1 UF, 600V DC CP5486E104V (81350)	BT9 C5..	EA	REF	*	*	*	*	*	*			26	C5	
PAFZZ	5910-801-3483	181P1040512 (56289)	BUA,BUB C3..	EA	4	*	*	*	*	*	*			11-1	C3	
PAFZZ	5910-801-3483	CAPACITOR, FIXED, PAPER DIELECTRIC 181P1040512 (56289)	BUA,BUB C4..	EA	REF	*	*	*	*	*	*			11-1	C4	
PAFZZ	5910-801-3483	CAPACITOR, FIXED, PAPER DIELECTRIC 181P1040512 (56289)	BUA,BUB C5..	EA	REF	*	*	*	*	*	*			11-1	C5	
PAFZZ	5910-801-3483	CAPACITOR, FIXED, PAPER DIELECTRIC 181P1040512 (56289)	BUA,BUB C6..	EA	REF	*	*	*	*	*	*			11-1	C6	
PAFZZ	5910-801-3483	HOLDER, BRUSH, ELECTRICAL CONTACT SM3369845 (80063)	BUA 05...	EA	2	*	*	*	*	*	*			11-1	05	
PAFZZ	5910-801-3483	HOLDER, BRUSH, ELECTRICAL CONTACT SM3369845 (80063)	BUA 06...	EA	REF	*	*	*	*	*	*			11-1	06	
PAFZZ	5910-801-3483	HOLDER, BRUSH, ELECTRICAL CONTACT SM3369855 (80063)	BUA 03...	EA	1	*	*	*	*	*	*			11-1	03	
PAFZZ	5910-801-3483	HOLDER, BRUSH, ELECTRICAL CONTACT SM3369855 (80063)	BUA 04...	EA	1	*	*	*	*	*	*			11-1	04	
PAFZZ	5975-406-1904	PLATE, LUCK NO-REF-DESIG..... 262-1136 (97475)	BT7	EA	4	*	*	*	*	*	*					
PAFZZ	5975-406-1904	RING, HOLDER ELECTRICAL BRUSH A156-631 (97475)	A1 AC .. A7L	EA	1	*	*	*	*	*	*	3			A1	
PAFZZ	5975-406-1904	RING, HOLDER ELECTRICAL BRUSH A156-910 (97475)	A2 DC .. A7L	EA	1	*	*	*	*	*	*					A2

SECTION II

(1) SMR CODE	(2) FEDERAL STOCK NUMBER	(3) DESCRIPTION REFERENCE NUMBER & MFR. CODE USABLE ON CODE	(4) UNIT OF MEAS	(5) QTY INC IN UNIT	(6) 30-DAY GS MAINT ALLOWANCE			(7) 30-DAY GS MAINT ALLOWANCE			(8) 1-YR ALW PER 100 EQUIP CHNGCY	(9) DEPOT MAINT ALW PER 100 EQUIP	(10) ILLUSTRATION	
					(a)	(b)	(c)	(a)	(b)	(c)			(a)	(b)
					1-20	21-50	51-100	1-20	21-50	51-100			FIGURE NO	ITEM NO
PAFZZ	6115-221-0900	RING, HOLDER ELECTRICAL BRUSH A1 AC... AND DC SMC328039 (80063) BT7,BT8,BT9,BUB	EA	2	*	*	*	*	*	*		3	25	A1
PAFZZ	6115-221-0900	RING, HOLDER ELECTRICAL BRUSH A2 AC... AND DC SMC328039 (80063) BT7,BT8,BT9,BUB	EA	REF	*	*	*	*	*	*			25	A2
XDFZZ		RING, HOLDER ELECTRICAL BRUSH A1..... SM8369826 (80063) BUA	EA	2	*	*	*	*	*	*			11-1	A1
XDFZZ		RING, HOLDER ELECTRICAL BRUSH A2..... SM8369826 (80063) BUA	EA	REF	*	*	*	*	*	*			11-1	A2
XDFZZ		SHIM M29..... SM8369887 (80063) BUA	EA	2	*	*	*	*	*	*			11-1	H29
XDOZZ		SPRING, HELICAL, EXTENSION E6 DC A168-1068 (97475) A7L	EA	2	*	*	*	*	*	*				E6
XDOZZ		SPRING, HELICAL, EXTENSION E7 AC A168-833 (97475) A7L	EA	2	*	*	*	*	*	*				E7
XDOZZ		SPRING, SPIRAL TORSION E7 AC SM8328044 (80063) BT7,BT9,BUB	EA	2	*	*	*	*	*	*				E7
XDFZZ		WINDING FIELD, MOTOR-GENERATOR L7L8..... SMJ328013GR2 (80063) BUA,BUB	EA	1	*	*	*	*	*	*			11-1	L7L8
XDFZZ		WINDING FIELD, MOTOR GENERATOR L5L6..... SMJ328013GR1 (80063) BUA,BUB	EA	1	*	*	*	*	*	*			11-1	L5L6

SECTION IV

INDEX - FEDERAL STOCK NUMBER AND REFERENCE NUMBER
CROSS-REFERENCE TO FIGURE AND ITEM NUMBER

STOCK NUMBER	FIGURE NO.	ITEM NO.	STOCK NUMBER	FIGURE NO.	ITEM NO.
3110-144-8615	8	01	5950-219-6695	18	L8
3110-144-8615	8	02			
3110-156-3493	25	01			
3110-156-3493	25	02			
3110-156-4219	11	01			
3110-156-4219	11	02			
3120-447-8449		01			
3120-447-8449		02			
5935-107-8984	19	R1	5950-834-2247	18-1	L2
5905-258-0253	18	R1	5975-404-1904		A1
5905-284-3338		R1	5977-194-9695		E2
5910-112-7158	21	C7	5977-194-9695		E3
5910-112-7260		C4	5977-228-7096	27	E4
			5977-228-7096	27	E5
			5977-228-7097	27	E2
			5977-228-7097	27	E3
			5977-230-6032		E4
			5977-230-6032		E5
			5977-230-6032	29	E4
			5977-230-6032	29	E5
5910-160-4803	29	C3	5977-232-5269		E4
5910-160-4803	29	C4	5977-232-5269		E5
5910-160-4803	29	C5	5977-232-5269	26	E4
5910-160-4803	29	C6	5977-232-5269	26	E5
			5977-232-6081		E2
			5977-232-6081		E3
			5977-232-6081	26	E2
			5977-232-6081	26	E3
5910-160-4891		C2	5977-232-6085	26	E4
5910-233-4891		C9	5977-232-6085	26	E5
5910-504-7418	13	C2			
5910-504-7418	26	C2			
5910-504-7418	26	C3	5977-519-6042	11-1	E4
5910-504-7418	26	C6	5977-519-6042	11-1	E5
5910-504-7418	26	C7	5977-513-6043	11-1	E2
			5977-519-6043	11-1	E3
5910-801-3483	25	C5			
5910-801-3483	25	C6			
5910-801-3483	26	C3			
5910-801-3483	26	C4	6115-221-0900	25	A1
5910-801-3483	26	C5	6115-221-0900	25	A2
5910-801-3483	26	C6	6115-221-0900	26	A1
			6115-221-0901		A1
5910-802-0556	13	C3			
			6125-406-1907	9	01
			6125-406-1907	9	02
5935-161-9766	19	J1			
5935-199-3178	21	J1			
5935-239-3326	18-1	J1			
5950-219-6695	18	L3			
5950-219-6695	18	L4			

SECTION IV

REFERENCE NO.	MFR CODE	FIG. NO.	ITEM NO.	REFERENCE NO.	MFR CODE	FIG. NO.	ITEM NO.
ASA15089	53021	11		SCD99875-14	80063		E2
ASA4293	47362		L4	SCD99875-14	80063		E3
ASA4293	47362		L8	SCD99875-22	80063	26	E2
ASA4687C	47362		A2	SCD99875-22	80063	26	E3
ASA4687E	53021	26	A3	SCD99875-3	80063	26	E4
ASA4688E	53021	26	A1	SCD99875-3	80063	26	E5
AS815081	53021	10	E1	SCD99875-4	80063		E2
AAS817770W4883	53021	11	E1	SCD99875-4	80063		E3
ASB17833W4685	53021	11	E1	SCD99875-6	80063		E2
AS017768	53021	11	FL1	SCD99875-6	80063		E3
A156-631	97475		A1	SCD99875-6	80063	26	E2
A156-910	97475		A2	SCD99875-6	80063	26	E3
A168-1068	97475		E6	SCD99875-8	80063	28	E2
A168-833	97475		E7	SCD99875-8	80063	28	E3
A179-295	97475		O1	SCD99875-9	80063		E4
A179-295	97475		O2	SCD99875-9	80063		E5
A179-295	97475	9	O1	SCD99875-9	80063	26	E4
A179-295	97475	9	O2	SCD99875-9	80063	26	E5
A18175	53021	18	L3	SMB328044	80063		E7
A18175	53021	18	L4	SMB328112	80063	18-1	L3
A246-531	97475		MP11	SMB328112	80063	18-1	L4
A261-1680	97475	21	MP10	SMB328134	80063	11-1	E4
A4293	53021	19	L3	SMB328134	80063	11-1	E5
A4293	53021	19	L4	SMB328135	80063	11-1	E2
A4363L	53021	18	L1	SMB328135	80063	11-1	E3
A4363L	53021	18	L5	SMB369826	80063	11-1	A1
B6338	97475	9	FL1	SMB369826	80063	11-1	A2
CA36KFW104	81349	13	C2	SMB369845	80063	11-1	O5
CA36KFW104	81349	26	C2	SMB369845	80063	11-1	O6
CA36KFW104	81349	26	C3	SMB369855	80063	11-1	O3
CA36KFW104	81349	26	C6	SMB369856	80063	11-1	O4
CA36KFW104	81349	26	C7	SMB369887	80063	11-1	H29
CA37KFW104	81349	13	C3	SMC328039	80063	25	A1
CA442	81351	13	C1	SMC328039	80063	25	A2
CA442	81351	13	C4	SMC328094	80063	18-1	L2
CA448	81349	25	C5	SMC328102	80063	18-1	L1
CA448	81349	25	C6	MD328013GR1	80063	11-1	L5L6
CA448	81349	26	C3	SMD328013GR2	80063	11-1	L7L8
CA448	81349	26	C4	SMD328052	80063	11-1	E1
CA448	81349	26	C5	Y1763L	J2770	27	E7
CA448	81349	26	C6	1C2P5C	14655		C1
CA448	81351	24	C3	1C2P5C	14655		C5
CA448	81351	24	C4	111-02003-2000	96906	8	O1
CA478F0103	81349	29	C3	111-02003-2000	96906	8	O2
CA478F0103	81349	29	C4	117-01715-3000	96906	25	O1
CA47BF0103	81349	29	C5	117-01715-3000	96906	25	O2
CA47BF0103	81349	29	C6	118-01775-400	96906	11	O1
CA507	81349	18	C1	118-01775-400	96906	11	O2
CA507	81349	18	C2	161-1265	97475		
CA507	81349	18	C4	162-116	97475	9	M1
CA507	81349	18	C5	162-78	97475	9	
CA507	81349	18	C8	181P1040S12	56289	11-1	C5
CA507	81349	18	C9	181P1040S12	56289	11-1	C6
CM40B512J	81349		C2	181P1040S12	56289	11-1	C3
CM40B512J	81349		C3	181P1040S12	56289	11-1	C4
CM40B512J	81349		C6	181P1040S12	56289	18-1	C1
CM40B512J	81349		C7	181P1040S12	56289	18-1	C2
CP53B4EF254V	81349	21	C7	181P1040S12	56289	18-1	C7
CP53B4EF254V	81349		C4	181P1040S12	56289	18-1	C8
CP53B6EF254V	81349		C2	18174	53021	18	L1
CP53B6EF254V	81349		C9	18174	53021	18	L2
CP54B6EF104V	81350	26	C3	18175	53021	18	L4
CP54B6EF104V	81350	26	C5	18175	53021	18	L8
C1B4A1239-24V	97475		E1	262-1136	97475		
C184A1259	97475	9	E1	273X3	82102	21	L1
C755A	97475			273X3	82102	21	L2
DIVBE0362B	44655	19	R1	4913	59690		O1
0366	44655		R1	4913	59690		O2
P468888C	47362		A1	5150	44655	18-1	MP9
RP151FD6K0KK	81349	18	R1	7033	72928	19	C7
SC0105822-8	80063	27	E2	7210	74545	19	J1
SC0105822-8	80063	27	E3	7255	74545	21	J1
SC099875-10	80063	27	E4	7295	72928	19	C1
SC099875-10	80063	27	E5	7295	72928	19	C2
SC099875-11	80063		E4	7235	74545	18-1	J1
SC099875-11	80063		E5	8937	53021	19	L1
SC099875-11	80063	29	E4	8937	53021	19	L2
SC099875-11	80063	29	E5				

By Order of the Secretary of the Army:

FRED C. WEYAND
General, United States Army
Chief of Staff

Official:

VERNE L. BOWERS
Major General, United States Army
The Adjutant General

Distribution:

Active Army:

USASA (2)	WRAMC (1)
CNGB (1)	ATS (1)
Dir of Trans (1)	Ft Gordon (10)
COE (1)	Ft Huachuca (10)
TSG (1)	WSMR (1)
USAARENBD (1)	Ft Carson (5)
AMC (1)	Ft Richardson (ECOM Ofc) (2)
TRADOC (2)	Army Dep (1) except
ARADCOM (2)	LBAD (14)
ARADCOM Rgn (2)	SAAD (30)
OS Maj Comd (4)	TOAD (14)
LOGCOMDS (3)	ATAD (10)
MICOM (2)	USA Dep (2)
TECOM (2)	Sig Sec USA Dep (2)
USACC (4)	Sig Dep (2)
MDW (1)	Sig FLDMS (1)
Armies (2)	USAERDAA (1)
Corps (2)	USAERDAW (1)
HISA (Ft Monmouth) (18)	MAAG (1)
Svc Colleges (1)	USARMIS (1)
USASESS (5)	Units org under fol TOE
USAADS (2)	(1 copy each unit)
USAFAS (2)	11-16
USAARMS (2)	11-98
USAIS (2)	11-117
USAES (2)	11-500 (AA-AC)
USAINTCS (3)	

NG None

USAR: None

For explanation of abbreviations used, see AR 310-50.

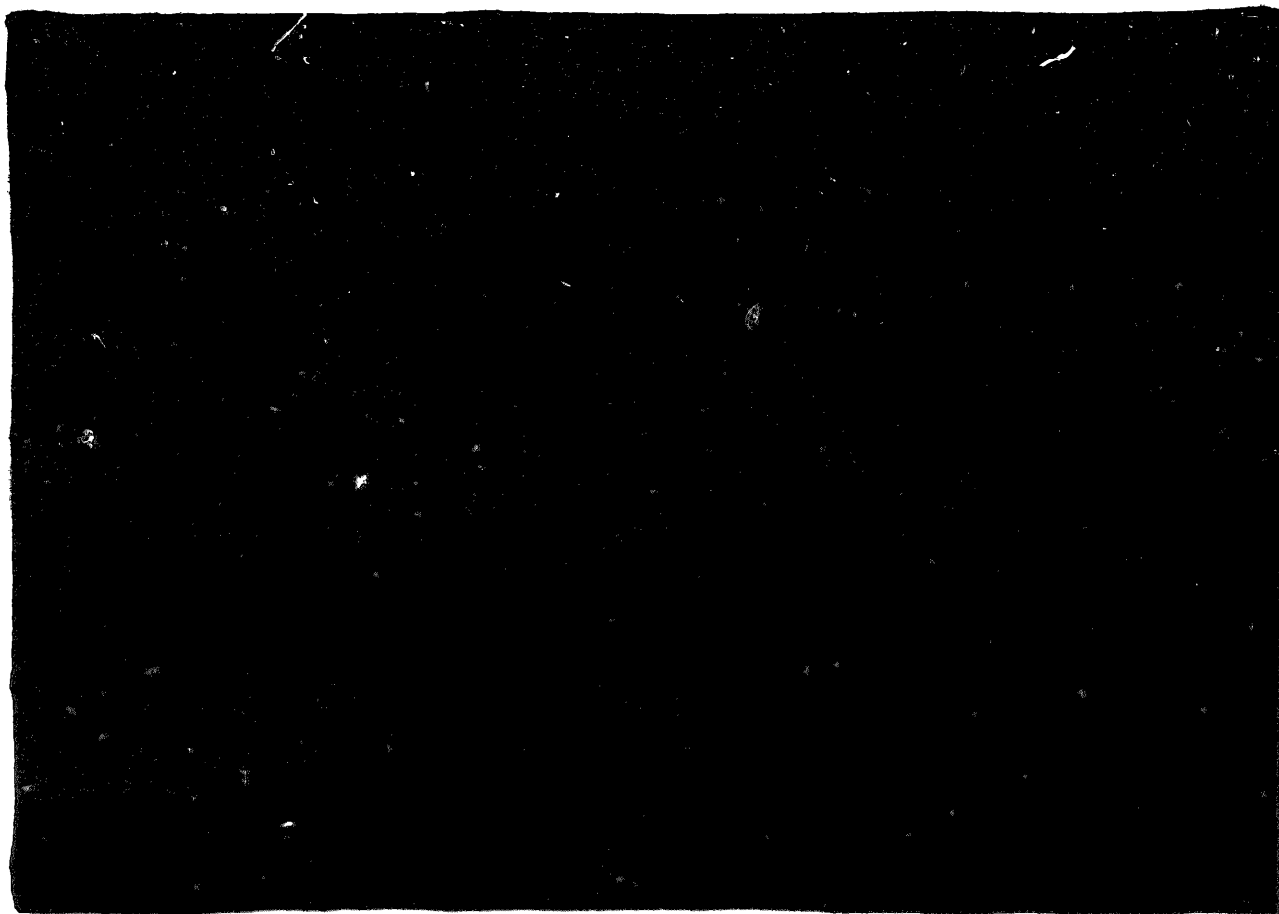
★ U. S. GOVERNMENT PRINTING OFFICE 1974-665135/321

END

12-08-82

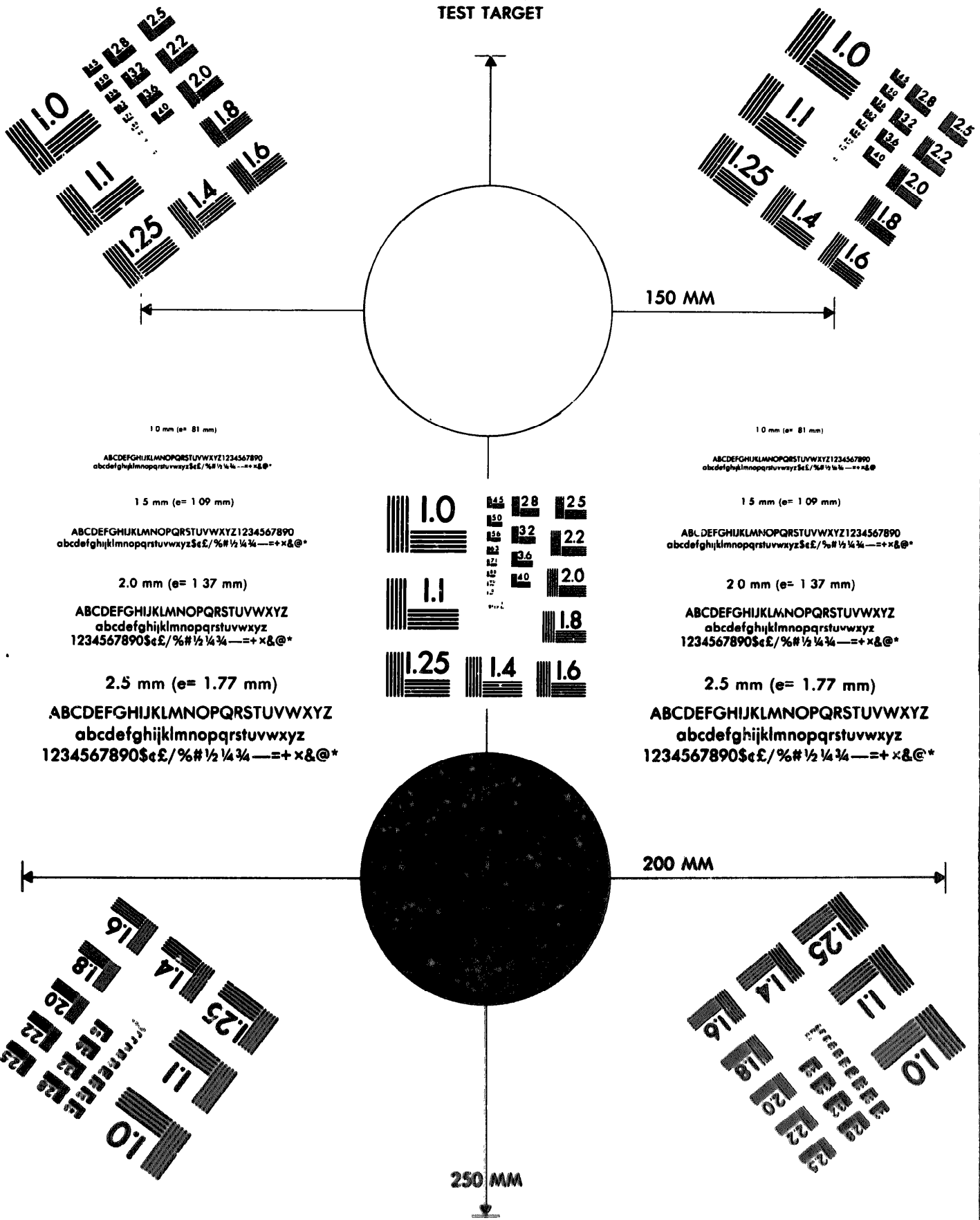
DATE





DEPARTMENT OF THE ARMY

MICROFORM
TEST TARGET



1.0 mm (e= 81 mm)

ABCDEFGHIJKLMN OPQRSTUVWXYZ 1234567890
abcdefghijklmnopqrstuvwxyz \$%&/'%# 1/2 1/4 3/4 — = + x & @ *

1.5 mm (e= 1.09 mm)

ABCDEFGHIJKLMN OPQRSTUVWXYZ 1234567890
abcdefghijklmnopqrstuvwxyz \$%&/'%# 1/2 1/4 3/4 — = + x & @ *

2.0 mm (e= 1.37 mm)

ABCDEFGHIJKLMN OPQRSTUVWXYZ
abcdefghijklmnopqrstuvwxyz
1234567890 \$%&/'%# 1/2 1/4 3/4 — = + x & @ *

2.5 mm (e= 1.77 mm)

ABCDEFGHIJKLMN OPQRSTUVWXYZ
abcdefghijklmnopqrstuvwxyz
1234567890 \$%&/'%# 1/2 1/4 3/4 — = + x & @ *

1.0 mm (e= 81 mm)

ABCDEFGHIJKLMN OPQRSTUVWXYZ 1234567890
abcdefghijklmnopqrstuvwxyz \$%&/'%# 1/2 1/4 3/4 — = + x & @ *

1.5 mm (e= 1.09 mm)

ABCDEFGHIJKLMN OPQRSTUVWXYZ 1234567890
abcdefghijklmnopqrstuvwxyz \$%&/'%# 1/2 1/4 3/4 — = + x & @ *

2.0 mm (e= 1.37 mm)

ABCDEFGHIJKLMN OPQRSTUVWXYZ
abcdefghijklmnopqrstuvwxyz
1234567890 \$%&/'%# 1/2 1/4 3/4 — = + x & @ *

2.5 mm (e= 1.77 mm)

ABCDEFGHIJKLMN OPQRSTUVWXYZ
abcdefghijklmnopqrstuvwxyz
1234567890 \$%&/'%# 1/2 1/4 3/4 — = + x & @ *

200 MM

250 MM